




EFiCell active charcoal filters provide ISO ePM10 85%/ M6 (EU6) initial efficiency, high velocity of adsorption, low drop of pressure, high dust retention capacity and excellent gas-type pollution adsorption capacity.

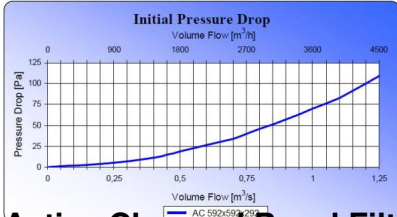
EFiCell AC use innovational three-level filtration environment where active charcoal is placed between two level s. Such an extraordinary advanced method provides the ultimate application of physical characteristics of active granular charcoal and unusually long term of filter service.

That filter has been developed to provide efficient filtration of volatile organic components (VOC) and of other low or medium concentration additions. Such additions could generate disgusting smell and sometimes do harm for human health. The principal sources of that undesirable pollution are gases processed by transport means and industrial emissions.

EFiCell AC is combined filter for particles and gases. It is processed from synthetic filtration material with core made of active charcoal .

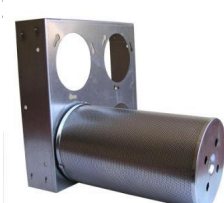
Active carbon filters

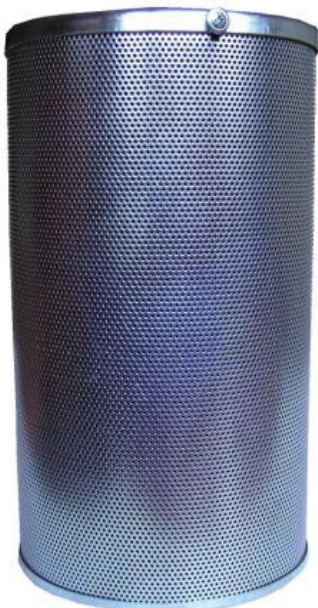
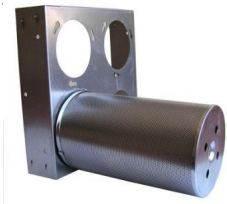

 The diagram shows a cross-section of a filter with three layers: a pre-filter layer at the top, a supporting layer in the middle, and a thick layer of activated carbon at the bottom.



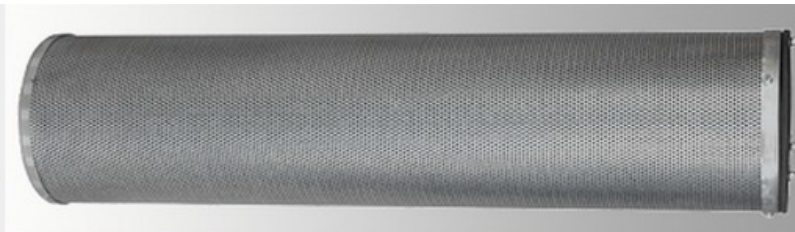
Active Charcoal Panel Filters

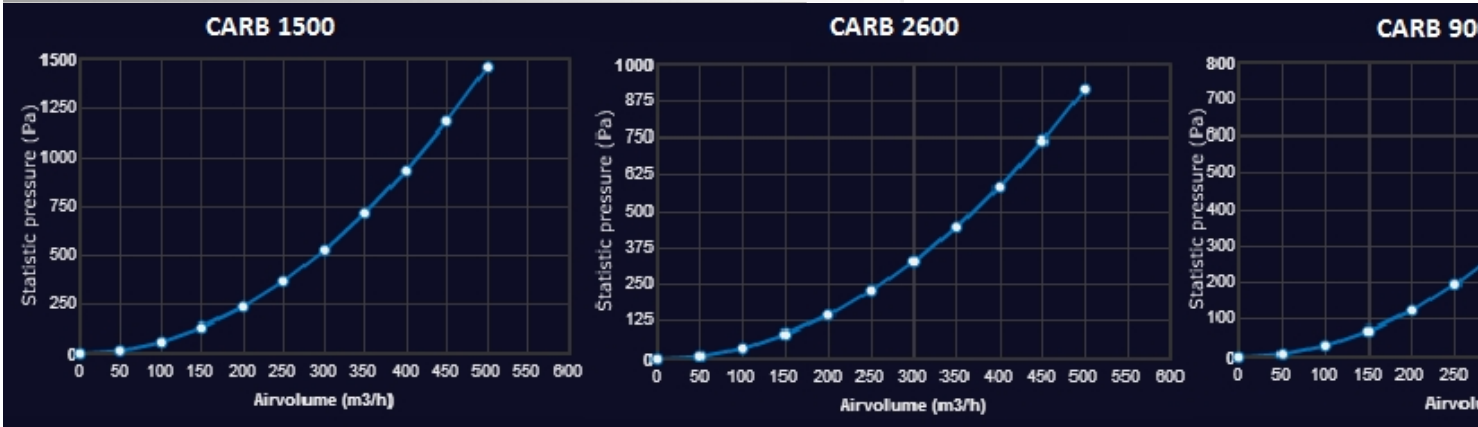
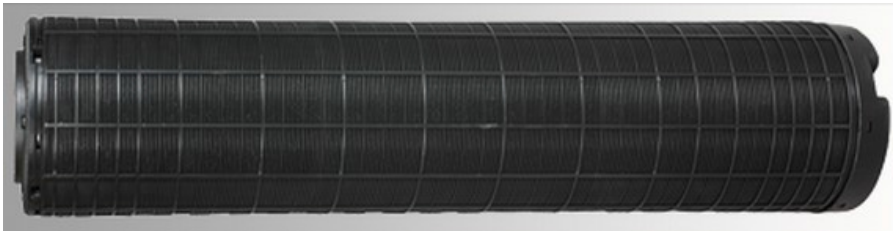



 This image shows a cylindrical filter mounted on a metal bracket with two circular cutouts.



AC 592/594/293 Cartridge Carbon thickness 25mm Pressure drop 0,5 Plastic cartridge 200m³/h





Mounting frames

Mounting frames are being produced from zinked metal or stainless steel.

Sizes mm	Cartridges
630x630x50	16
325x630x50	8
350x350x50	4
325x325x50	4

Different sizes are available.